

STERLING PROFILE 1, 2 AND 3

Sterling Profile systems 1 to 3 are popular and stylish looking perimeter dado and skirting systems that are easy and cost effective to use. A firm favourite for many years due to its versatility, range of fittings and accessories and suitability for many different cable management installation needs.

Product information

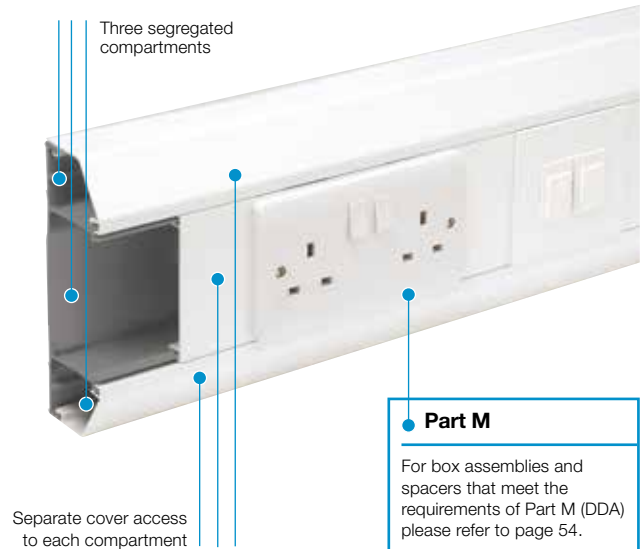
- 167 x 50mm
- 3 segregated compartments
- Suitable for dado and skirting application
- Can be fed from larger trunking systems for increased cable distribution
- Boxes available to comply with Part M (DDA)
- Comprehensive range of flush power and data accessories
- Moulded fittings with Profile 1 and Profile 2
- Self extinguishing and non-flame propagating PVC-U
- Fire clips available to secure cables within trunking and prevent premature collapse in the event of a fire

Data information

- Compliant up to Cat 7a
- Standard bend radius 25mm
- Data fittings available for bend radius up to 50mm
- Compartment can be screened to assist against EMI with no reduction in cable capacity (refer to p103)
- Adjustable data box 32-40mm
- Screened data boxes
- Steel screening divider available to BS EN 50714-2



'Bio option' available to special order



Part M

For box assemblies and spacers that meet the requirements of Part M (DDA) please refer to page 54.

PVC-U PERIMETER TRUNKING SYSTEMS

Standard Colours	
WH	CH
WH: White CH: Charcoal	

Colour options: Charcoal solid colour option is available as standard item for selected Profile 1 fittings. Please indicate when ordering by replacing the WH colour code suffix with CH for charcoal.

See page 73 for quick reference chart

Trunking profiles



Sterling Profile 1 trunking assembly

code	size	pack
EP1MWH	167 x 50mm	1 x 3m

Charcoal is available as standard for Profile 1



Sterling Profile 2 trunking assembly

code	size	pack
EP2MWH	167 x 50mm	1 x 3m



Sterling Profile 3 trunking assembly

code	size	pack
EP3MWH	167 x 50mm	1 x 3m

Basic components



Base unit

code	pack
ETB1M	4 x 3m

Please note the colour of the unseen base ETB1M may vary



Main compartment cover

code	pack
ETL1WH	8 x 3m

Charcoal is available as standard



Angled cover

code	pack
ETAC1WH	8 x 3m

Charcoal is available as standard



Square cover

code	pack
ETSC1WH	8 x 3m

REASSURINGLY RECYCLED

OUR WHITE STERLING BUILT UP PROFILES ARE MANUFACTURED USING THE FOLLOWING PERCENTAGES OF RECYCLED MATERIAL.

PROFILE 1 62%
PROFILE 2 57%
PROFILE 3 54%

p248 Technical Information

Profile 1 fittings



Profile 1 Coupler

code	description	pack
ECP1MWH	1 piece	2

Charcoal is available as standard



Profile 1 End cap

code	description	pack
EERP1MWH	1 piece	2

Universal for both LH & RH
Charcoal is available as standard



Profile 1 Internal bend

code	description	pack
EIBP1MWH	1 piece	2

Charcoal is available as standard



Profile 1 Internal bend cover

code	description	pack
EIBD1WH		1



Profile 1 Internal bend assembly

code	description	pack
ELIBD1WH		1

Charcoal is available as standard



Profile 1 External bend

code	description	pack
EXBP1MWH	1 piece	2

Charcoal is available as standard



Profile 1 Flat angle - up/down cover (ABS)

code	description	pack
EFA1MWH		1

Charcoal is available as standard



With integral bend radius control

Profile 1 Flat angle - up/down complete (ABS)

code	description	pack
EFA1MBWH		1

Charcoal is available as standard



Profile 1 Flat tee cover (ABS)

code	description	pack
EFT1MWH		1

Charcoal is available as standard



With integral bend radius control

Profile 1 Flat tee complete (ABS)

code	description	pack
EFT1MBWH		1

Charcoal is available as standard

Profile 2 fittings



Profile 2 Coupler

code	description	pack
ECP2MWH	1 piece	2

Charcoal is available as standard



Profile 2 End cap

code	description	pack
EERP2MLHWH	(left) 1 piece	2
EERP2MRHWH	(right) 1 piece	2

Charcoal is available as standard



Profile 2 Internal bend

code	description	pack
EIBP2MWH	1 piece	2

Charcoal is available as standard



Profile 2 Internal bend cover

code	description	pack
EIBD2WH		1



Profile 2 Internal bend assembly

code	description	pack
ELIBD2WH		1

Charcoal is available as standard



Profile 2 External bend

code	description	pack
EXBP2MWH	1 piece	2

Charcoal is available as standard



Profile 2 Flat angle - upward

code	description	pack
EFA2UWH		1

Charcoal is available as standard



Profile 2 Flat angle - downward

code	description	pack
EFA2DWH		1

Charcoal is available as standard

Profile 3 fittings



Profile 3 Coupler

code	description	pack
ECP3WH	3 piece	2
ECHP3WH	1 piece	2



Profile 3 End cap

code	description	pack
EECP3WH	3 piece	2
EECHP3WH	1 piece	2

Universal for both LH & RH



Profile 3 Internal bend

code	description	pack
EIBP3WH	3 piece	2
EIBHP3WH	1 piece	2



Profile 3 Internal bend cover

code	pack
EIBD3WH	1



Profile 3 Internal bend assembly

code	pack
ELIBD3WH	1



Profile 3 External bend

code	description	pack
EXBP3WH	3 piece	2
EXBHP3WH	1 piece	2



Profile 3 Flat angle

code	pack
EFA3WH	1



Profile 3 Flat tee

code	pack
EFT3WH	1

Fittings



Angled mini trunking adaptor MMT2

code	pack
EATA2WH	5



Angled mini trunking adaptor MMT4

code	pack
EATA4WH	5



Square mini trunking adaptor MMT2

code	pack
ESTA2WH	5



Square mini trunking adaptor MMT4

code	pack
ESTA4WH	5

Firefly clips



NEW

Fire clip Sterling centre compartment

code	pack
FCSPC	50



NEW

Fire clip Sterling angle & curve compartment

code	pack
FCSPAC	100



NEW

Fire clip Sterling square compartment

code	pack
FCSPS	100



NEW

Don't forget, Firefly clips to comply with the current edition of BS 7671 Wiring Regulations

See page 141 for more information

Components



Main crossover bridge

code	pack
EMCB1	5



Angled cable retainer

code	pack
EACR1	10

p248

Technical Information

Boxes and plates



*RCD/MCB Housing		
code		pack
EAHC1MWH		1

Not available in charcoal
 *Up to 4 modules can be accommodated
 Note: RCDs are not supplied by Marshall-Tufflex



1 gang accessory box		
code	depth	pack
ESSB1WH	30mm	20

ESSB1 and ESSB2 are also available from stock in charcoal.



2 gang accessory box		
code	depth	pack
ESSB2WH	30mm	10

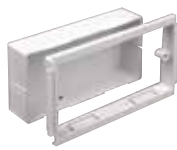


Accessory box spacer		
code	size	pack
ES1WH	14mm	4

For use between accessory boxes



1 gang adjustable depth box		
code	depth	pack
EAB1WH	32 – 47mm	10



2 gang adjustable depth box		
code	depth	pack
EAB2WH	32 – 47mm	5

Please see page 261 for more information on the range of adjustable boxes



1 gang accessory plate	
code	pack
ESSP1WH	2



2 gang accessory plate	
code	pack
ESSP2WH	2

Part M

For boxes that meet the requirements of Part M (DDA) please refer to page 54.



Screening



Steel screening divider	
code	pack
ESF1	1 x 1.5m

Note: optional steel screening divider to assist in compliance with BS EN 50174-2



Steel screening divider bonding strap	
code	pack
ESF2	5



Bonding strap	
code	pack
ESBS1	5



Screened base unit (comp 1 & 3)	
code	pack
ETB1MCS13	1 x 3m



Screened angled cover	
code	pack
ETAC1CSWH	1 x 3m

(2 angled covers needed)



1 gang screened accessory box		
code	depth	pack
ESSB1SWH	30mm	20



2 gang screened accessory box		
code	depth	pack
ESSB2SWH	30mm	10

Screening

Conductive spray (CS) is unique to Marshall-Tufflex and is applied in the factory to assist in screening from electromagnetic interference to data and communications cabling within trunking systems. The coating is applied to a range of data boxes, covers, clip-on components and fabricated fittings.

WARNING: A CS coating is not suitable for low voltage circuits. As per the current version of BS 7671 wiring regulations. For data/voice use only.

Screened compartments key to coding

CS13 = screening in compartments 1 and 3

Gascoigne Primary School

Sterling Profile 1

Sterling Profile 1 dado system has been used extensively in the expansion of Gascoigne Primary School, Barking, Essex, the largest primary school in the UK.

The most recent development of the school is an £11m project providing a new three-storey facility to accommodate 1,500 pupils. To power this large and complex building, considerable electrical wiring was required. Sterling Profile 1 system in white was used with a charcoal main compartment cover, a versatile, cost-effective, and high-quality trunking that has a proven track-record of meeting the demands of school environments.

“One of the key factors in our decision was Sterling’s versatility – it can be used at a 90° bend, allowing installers to easily fit it in the new school without too much doctoring. Supply chain was also very important – we used hundreds of metres at Gascoigne, with the three compartment trunking in every single room apart from the kitchen and main hall. Being the largest school in the UK this is a significant project and Sterling has more than stood up to the challenge. We have tried competitor products in the past but Marshall-Tufflex can’t be beaten on quality or price.”



QUALITY REASSURANCE

PVC-U trunking made from recycled windows is more robust than product made from virgin grade material.



**REASSURINGLY
RECYCLED**

Quick reference chart
Sterling Profile 1, 2 and 3

3 compartment

Profile 1	Profile 2	Profile 3
167 x 50mm	167 x 50mm	167 x 50mm



Base unit Pack 4 x 3m		ETB1M	ETB1M	ETB1M
Main compartment cover Pack 8 x 3m		ETL1WH	ETL1WH	ETL1WH
Angled cover Pack 8 x 3m		2 x ETAC1WH	ETAC1WH	-
Square cover Pack 8 x 3m		-	ETSC1WH	2 x ETSC1WH
Couplers Pack 2		ECP1MWH	ECP2MWH	ECP3WH or ECHP3WH
End caps Pack 2		EECP1MWH	EECP2MRHWH EECP2MLHWH	EECP3WH or EECHP3WH
Internal bend Pack 2		EIBP1MWH	EIBP2MWH	EIBP3WH or EIBHP3WH
Internal bend assemblies Pack 1		ELIBD1WH	ELIBD2WH	ELIBD3WH
Internal bend covers only Pack 1		EIBD1WH	EIBD2WH	EIBD3WH
External bends Pack 2		EXBP1MWH	EXBP2MWH	EXBP3WH or EXBHP3WH
Flat angles up or down Pack 1		EFA1MWH or EFA1MBWH	EFA2UWH EFA2DWH	EFA3WH
Flat tees up or down Pack 1		EFT1MWH or EFT1MBWH	EFT2UWH †	EFT3WH

PVC-U PERIMETER TRUNKING SYSTEMS

Note: Profile 2 and 3 flat angles and tees are fabricated

† Sterling Profile 2 flat tees
Sterling Profile 2 flat tees use an angled cover for the upwards cover and tee.